

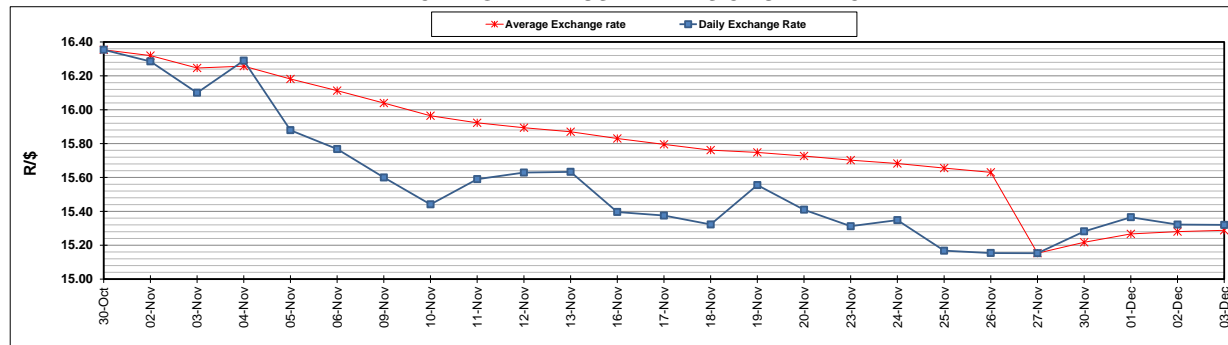
	PETROL 95 ULP	PETROL 93 ULP & LRP	DIESEL 0.05%	DIESEL 0.005%	ILL. PAR.
GAUTENG PUMP PRICE (SA c/l) AS FROM 02/12/2020	1,446.000	1,426.000	-	-	-
WHOLESALE PRICE (SA c/l) AS FROM 02/12/2020	-	-	1,245.420	1,247.820	684.688
SINGLE NATIONAL MAXIMUM RETAIL PRICE	-	-	-	-	856.000
BASIC FUEL PRICE - 03/12/2020 (SA c/l)	512.047	506.117	534.101	535.383	518.073
PRESS RELEASE CONTRIBUTION TO BFP 02/12/2020 - 03/12/2020 (SA c/l)	479.170	469.170	486.630	489.030	472.128
UNIT OVER/(UNDER) RECOVERY - 03/12/2020 (SA c/l)	(32.877)	(36.947)	(47.471)	(46.353)	(45.945)
AVERAGE BASIC FUEL PRICE 27/11/2020 - 03/12/2020	509.298	502.161	528.538	529.732	512.425
AVERAGE UNIT OVER/(UNDER) RECOVERY 27/11/2020 - 03/12/2020	(13.748)	(16.611)	(49.108)	(47.902)	(52.897)

ANALYSIS MOVEMENT OF AVERAGE OVER/(UNDER) RECOVERY

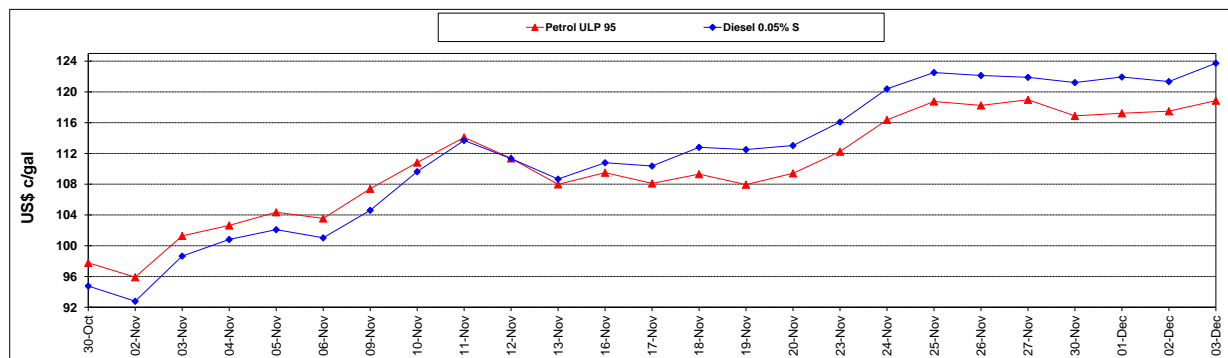
	PETROL 95	PETROL 93	DIESEL 0.05%	DIESEL 0.005%	ILL. PAR.
- MOVEMENT IN INTERNATIONAL PRODUCT PRICES	(25.144)	(27.848)	(60.935)	(59.756)	(64.363)
- MOVEMENT IN EXCHANGE RATE	11.396	11.237	11.827	11.854	11.466
AVERAGE UNIT OVER/(UNDER) RECOVERY 27/11/2020 - 03/12/2020	(13.748)	(16.611)	(49.108)	(47.902)	(52.897)

R/\$ EXCHANGE RATE - (R/\$15.3200 - 03/12/2020)

EXCHANGE RATE USED IN BASIC FUEL PRICE



INTERNATIONAL PRODUCT PRICES OF BASKET USED IN BASIC FUEL PRICE



BASIC FUEL PRICE IN SA CENTS PER LITRE

